



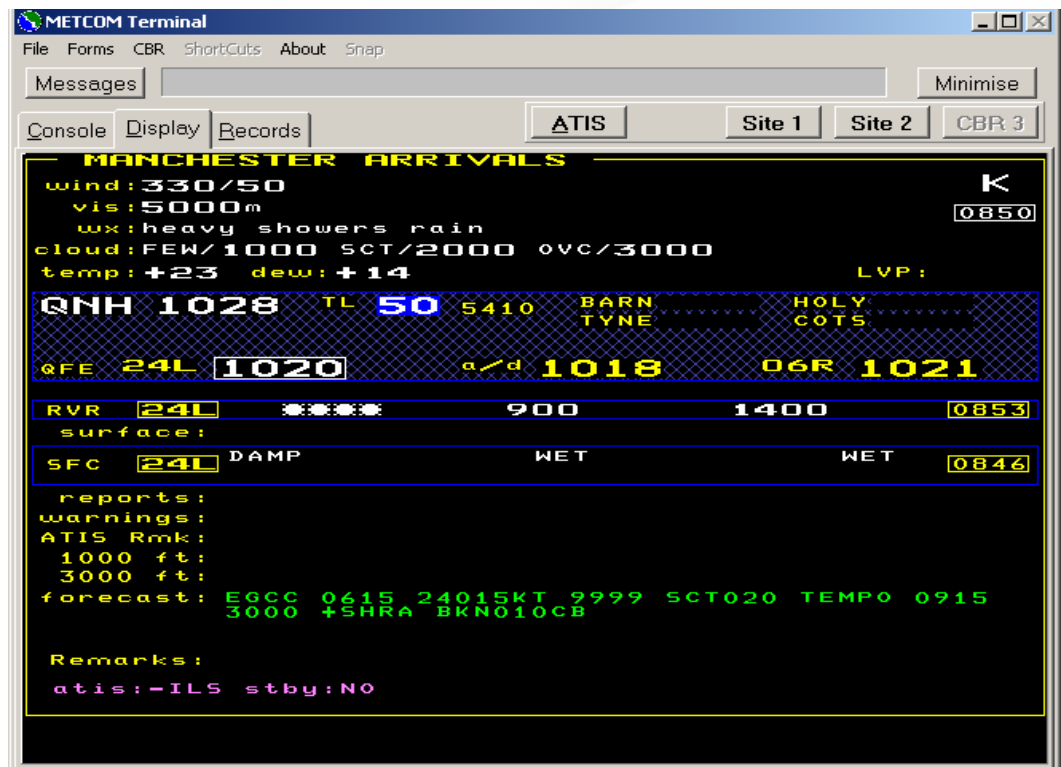
Metcom is a 32 bit **Meteorological Data Processing System** designed to run under the Windows 2000 or XP operating systems and has been developed from the Muir Matheson DOS Metcom System which has provided reliable information for over 20 years.

The Metcom system has recently been supplied to Manchester, Doncaster/Finningley and London Heathrow Airports.

The Metcom system is also compliant with ICAO and WMO standards and built to UK CAA CAP746 requirements.

Metcom System

- Basic weather data processing to compile METAR and SPECI reports
- Specialist modules for Cloud & Visibility analysis
- Display to ATC
- Integral ATIS with customised site library
- Interfaces to IRVR systems
- Import and export of AFTN data
- Easy upgrade via standard PC hardware
- Fully supported by Muir Matheson
- Software upgrades available to maintain compliance with requirements
- Assistance available for safety case preparation

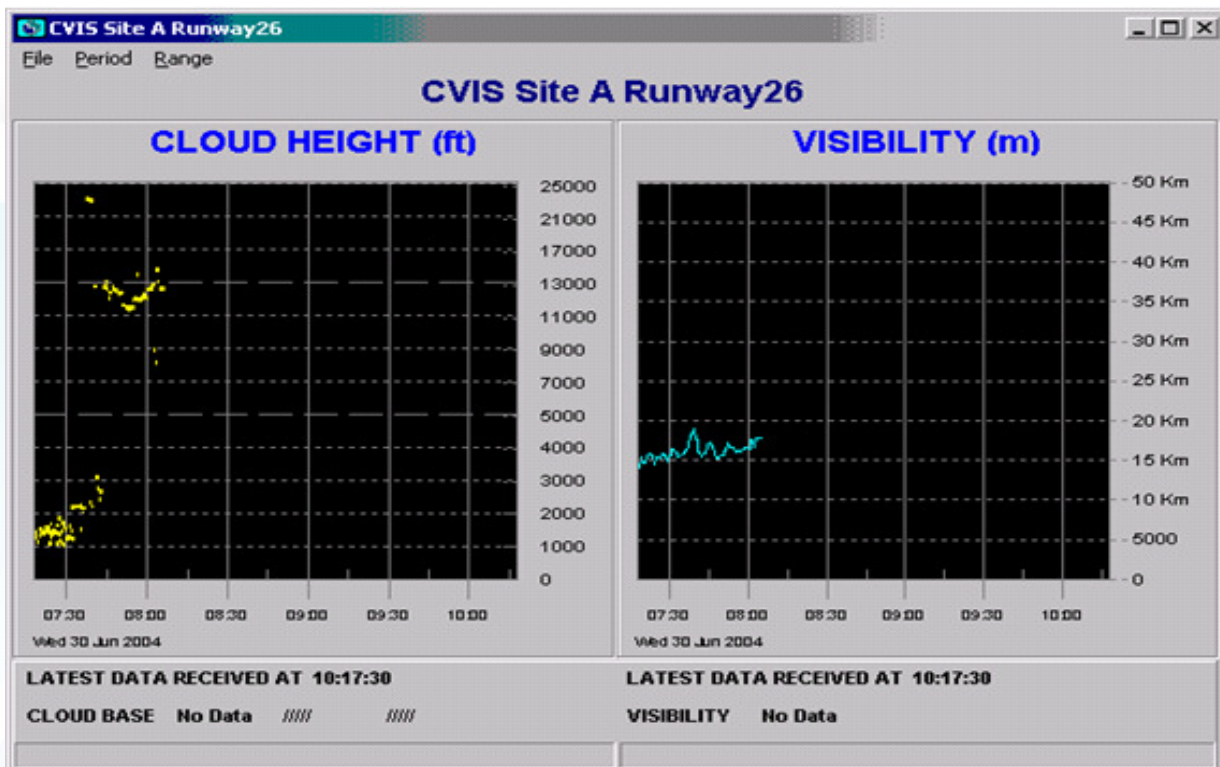


Muir Matheson Ltd
 Aberlan House, Woodburn Road,
 Blackburn Industrial Estate,
 Aberdeen
 AB21 0RX
 UNITED KINGDOM
 T +44 (0) 1224 791222
 F +44 (0) 1224 791555
 E Sales@muir-matheson.com

The screenshot displays the ATISTerm software interface, which is used for managing and displaying ATIS (Automatic Terminal Information Service) messages. The interface is divided into several sections:

- ALERTS:** A panel for displaying alerts.
- RWY (Runway):** Includes fields for 'Info / Time / Rwy' with values 'G', '1720', and '24L', and an 'Update' button.
- LVP (Localizer/Vor):** A dropdown menu for selecting the LVP type.
- MET (Meteorological):** Fields for 'Wind' (5000), 'Visibly' (33050KT), 'Weather', 'Cloud' (FEW010 SCT020 OVC030), 'Temp / QNH' (20/15, 1028), and 'Trend'.
- SURFACE:** Fields for '1st Thd' (Wet), '2nd Thd' (Damp), and '3rd Thd' (Wet), along with 'depth' and 'b/a' fields.
- SHEAR:** Fields for '1st / highest' (-10, 100), '2nd / lower', and '3rd / lowest', along with 'Fcst Rep' and 'At time' fields.
- NAV (Navigation):** A 'Select' dropdown menu and a 'Selected' field showing 'ILS Unservicable'.
- APPENDAGES:** A list of messages including 'DELIV_OPEN', 'EMERG', 'EVAC', 'HOLDSHORT', 'LINK', 'NAV', 'SINGLE', 'SMR', and 'TWY'. A 'CLR' button is present.
- CURRENT ATIS:** A large text area displaying the current ATIS message, including 'EGCC ARR ATIS G 1720Z', 'ARRIVAL RWY 24L', and various weather and runway information.

ATIS Information Screen



Cloud & Visibility Display
Available where appropriate sensors are installed